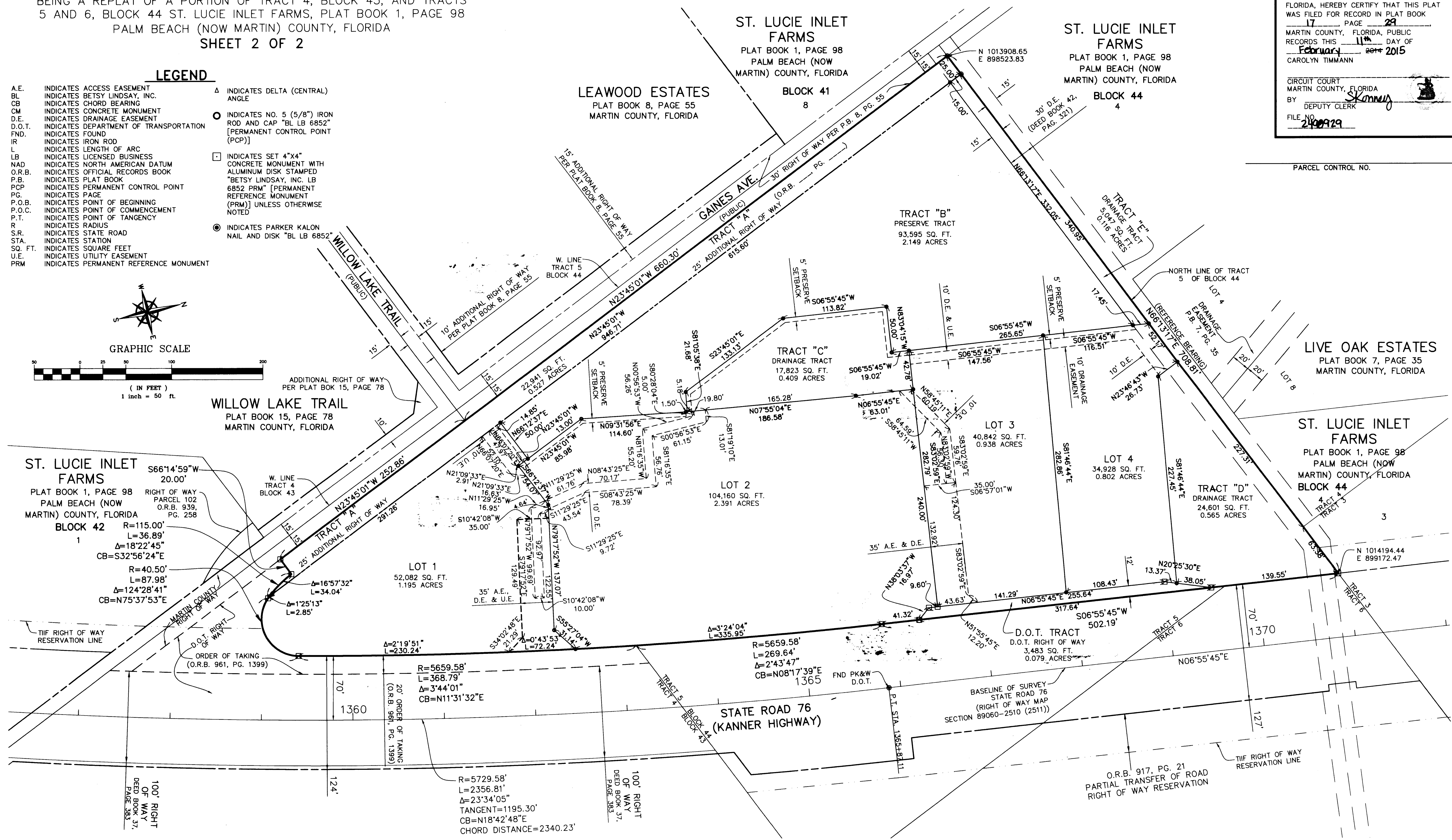
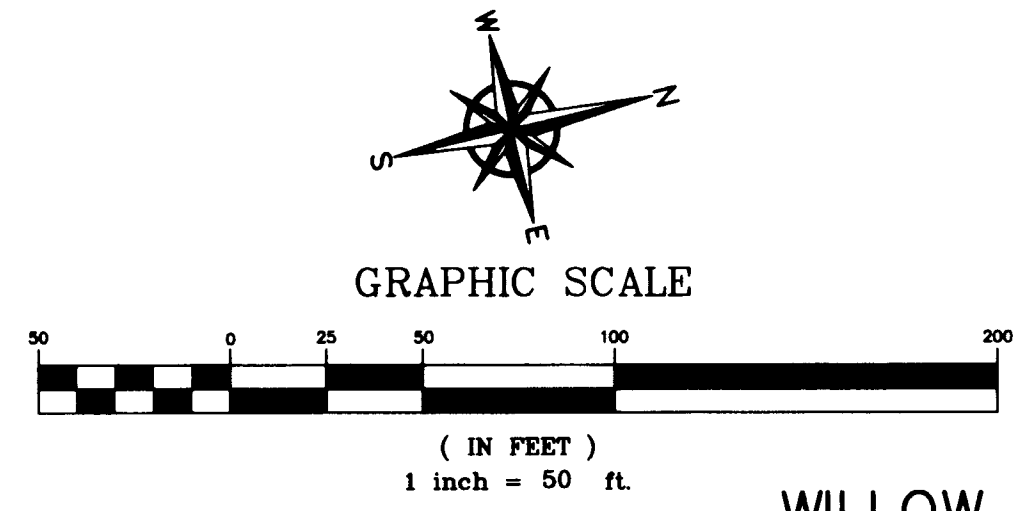


KANNER BUSINESS PARK

BEING A REPLAT OF A PORTION OF TRACT 4, BLOCK 43, AND TRACTS 5 AND 6, BLOCK 44 ST. LUCIE INLET FARMS, PLAT BOOK 1, PAGE 98
PALM BEACH (NOW MARTIN) COUNTY, FLORIDA
SHEET 2 OF 2

CLERK'S RECORDING CERTIFICATE
I, CAROLYN TIMMANN, CLERK OF THE CIRCUIT COURT OF MARTIN COUNTY, FLORIDA, HEREBY CERTIFY THAT THIS PLAT WAS FILED FOR RECORD IN PLAT BOOK 17, PAGE 29, MARTIN COUNTY, FLORIDA, PUBLIC RECORDS THIS 11th DAY OF February, 2015.
CAROLYN TIMMANN
CIRCUIT COURT MARTIN COUNTY, FLORIDA
BY: DEPUTY CLERK *Skomny*
FILE NO. 2400929

- LEGEND**
- | | | | |
|---------|--|---|--|
| A.E. | INDICATES ACCESS EASEMENT | Δ | INDICATES DELTA (CENTRAL) ANGLE |
| BL | INDICATES BETSY LINDSAY, INC. | ○ | INDICATES NO. 5 (5/8") IRON ROD AND CAP "BL LB 6852" [PERMANENT CONTROL POINT (PCP)] |
| CB | INDICATES CHORD BEARING | □ | INDICATES SET 4"x4" CONCRETE MONUMENT WITH ALUMINUM DISK STAMPED "BETSY LINDSAY, INC. LB 6852 PRM" [PERMANENT REFERENCE MONUMENT (PRM)] UNLESS OTHERWISE NOTED |
| CM | INDICATES CONCRETE MONUMENT | ● | INDICATES PARKER KALON NAIL AND DISK "BL LB 6852" |
| D.E. | INDICATES DRAINAGE EASEMENT | | |
| D.O.T. | INDICATES DEPARTMENT OF TRANSPORTATION | | |
| FND. | INDICATES FOUND | | |
| IR | INDICATES IRON ROD | | |
| L | INDICATES LENGTH OF ARC | | |
| LB | INDICATES LICENSED BUSINESS | | |
| NAD | INDICATES NORTH AMERICAN DATUM | | |
| O.R.B. | INDICATES OFFICIAL RECORDS BOOK | | |
| P.B. | INDICATES PLAT BOOK | | |
| PCP | INDICATES PERMANENT CONTROL POINT | | |
| PG. | INDICATES PAGE | | |
| P.O.B. | INDICATES POINT OF BEGINNING | | |
| P.O.C. | INDICATES POINT OF COMMENCEMENT | | |
| P.T. | INDICATES POINT OF TANGENCY | | |
| R | INDICATES RADIUS | | |
| S.R. | INDICATES STATE ROAD | | |
| STA. | INDICATES STATION | | |
| SQ. FT. | INDICATES SQUARE FEET | | |
| U.E. | INDICATES UTILITY EASEMENT | | |
| PRM | INDICATES PERMANENT REFERENCE MONUMENT | | |



GENERAL NOTES

A. BEARINGS AS SHOWN HEREON ARE BASED ON STATE PLANE COORDINATES, NORTH AMERICAN DATUM OF 1983/1990 (NAD 83/90), FLORIDA EAST ZONE, REFERENCE A BEARING OF N66°13'17"E ALONG THE NORTH LINE OF THE TRACTS 5 AND 6 OF BLOCK 44 OF THE PLAT OF ST. LUCIE INLET FARMS, PLAT BOOK 1, PAGE 98, PUBLIC RECORDS OF PALM BEACH (NOW MARTIN) COUNTY, FLORIDA.

B. THIS PLAT, AS RECORDED IN ITS ORIGINAL FORM IN THE PUBLIC RECORDS, IS THE OFFICIAL DEPICTION OF THE SUBDIVIDED LANDS DESCRIBED HEREON AND WILL IN NO CIRCUMSTANCES BE SUPPLEMENTED IN AUTHORITY BY ANY OTHER FORM OF THE PLAT, WHETHER GRAPHIC OR DIGITAL.

C. NOTICE: THERE MAY BE ADDITIONAL RESTRICTIONS THAT ARE NOT RECORDED ON THIS PLAT THAT MAY BE FOUND IN THE PUBLIC RECORDS OF THIS COUNTY.

SPECIAL NOTES APPLICABLE TO THIS PLAT

AN ACCESS EASEMENT ACROSS LOT 3 WILL BE CREATED BY A SEPARATE INSTRUMENT TO PROVIDE ACCESS TO LOT 4.
PER CHAPTER 177.101 F.S. ALL OF THAT PORTION OF THE PLAT OF ST. LUCIE INLET FARMS LYING WITHIN THE LIMITS OF THIS REPLAT WILL BE VACATED AND ANNULLLED BY RECORDATION OF THIS PLAT OF KANNER BUSINESS PARK.

B BETSY LINDSAY, INC.
SURVEYING AND MAPPING
7997 S.W. JACK JAMES DRIVE STUART, FLORIDA 34997
(772)286-5753 (772)286-5933 FAX
LICENSED BUSINESS NO. 6852
KANNER BUSINESS PARK SHEET 2 OF 2

C:\p\projects\035 SR 76\KASAS\dwg\PLAT-51.LUCI.L45.6.tbl 4: 25: 14.dwg, 10/10/2014 4:50:59 PM, KIP 3000 Series (temporary).pc3